

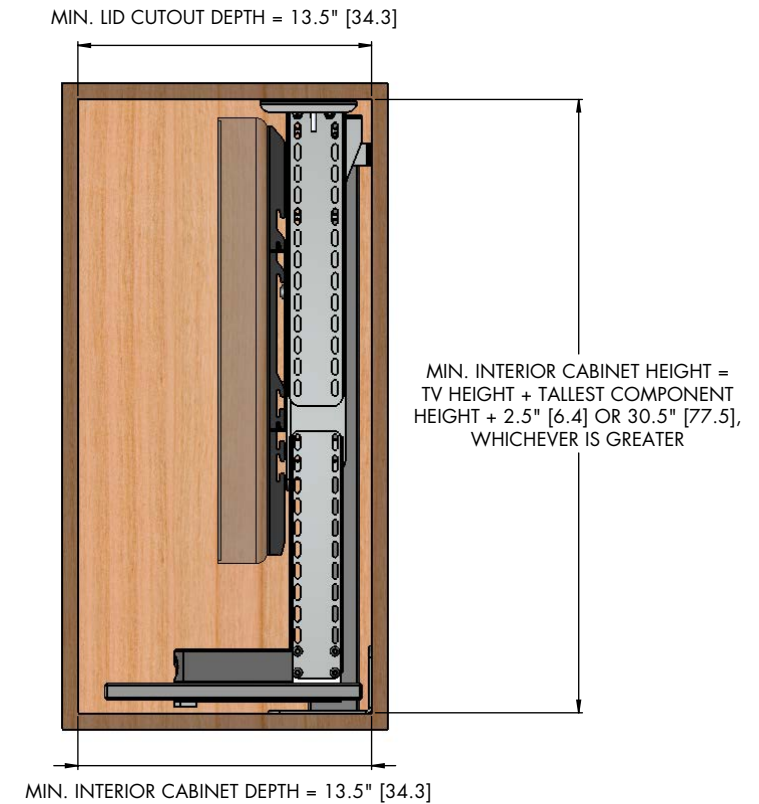
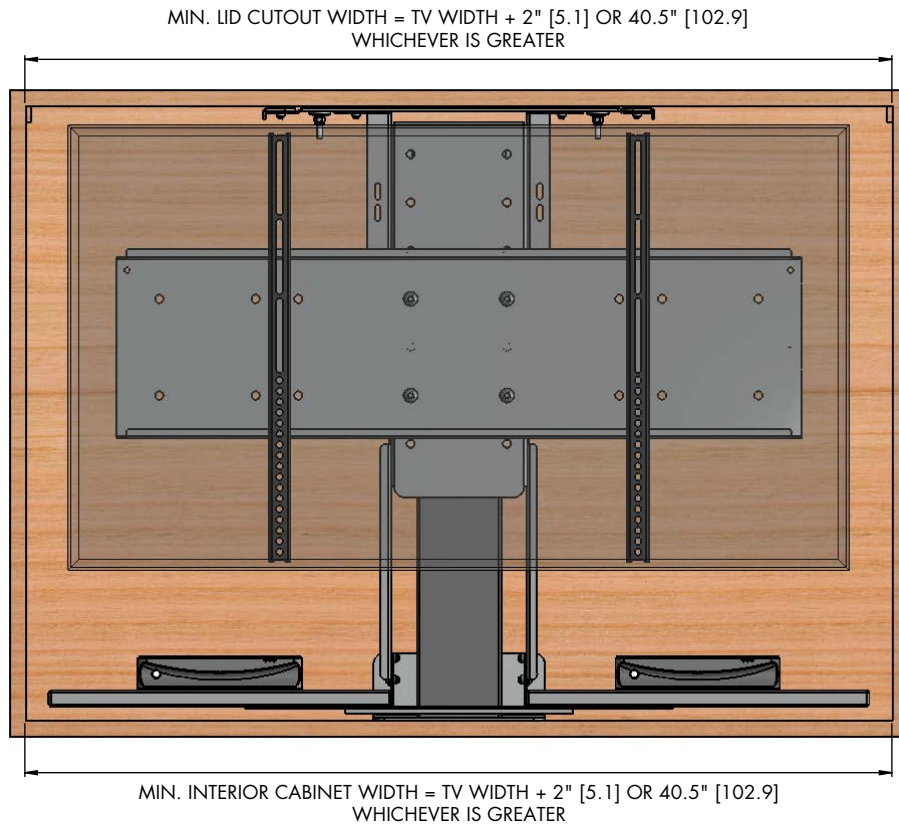
MODEL L-50 DIAGRAM WITH COMPONENT SHELF - PRIMARY CABINET DIMENSIONS

SPECIFICATIONS (CENTIMETERS ARE REPRESENTED BY [])

MAX TV SIZE : 65"
 MAX WEIGHT CAPACITY : 100 LBS [45.4 KG]
 MAX TRAVEL (EXTENSION) : 39.25" [99.7]
 LIFT SYSTEM HEIGHT : 28.5" [72.4] TO 40.5" [102.9]
 MAX TV + COMPONENT HEIGHT : 38" [96.5] MINUS LID THICKNESS

QUICK REFERENCE DIMENSION GUIDE (USE WHICHEVER IS GREATER)

TV DIMENSIONS : W____, H____, D____
 SHELF COMPONENT DIMENSIONS : CW____, CH____, CD____
 MIN. INTERIOR CABINET WIDTH : $W+2"$ [5.1] = ____ OR 40.5" [102.9]
 MIN. LID CUTOUT WIDTH : ____
 MIN. INTERIOR CABINET HEIGHT : $H+CH+2.5"$ [6.4] = ____ OR 30.5" [77.5]
 MIN. INTERIOR CABINET DEPTH : ____
 MIN. LID CUTOUT DEPTH : 13.5" [34.3]



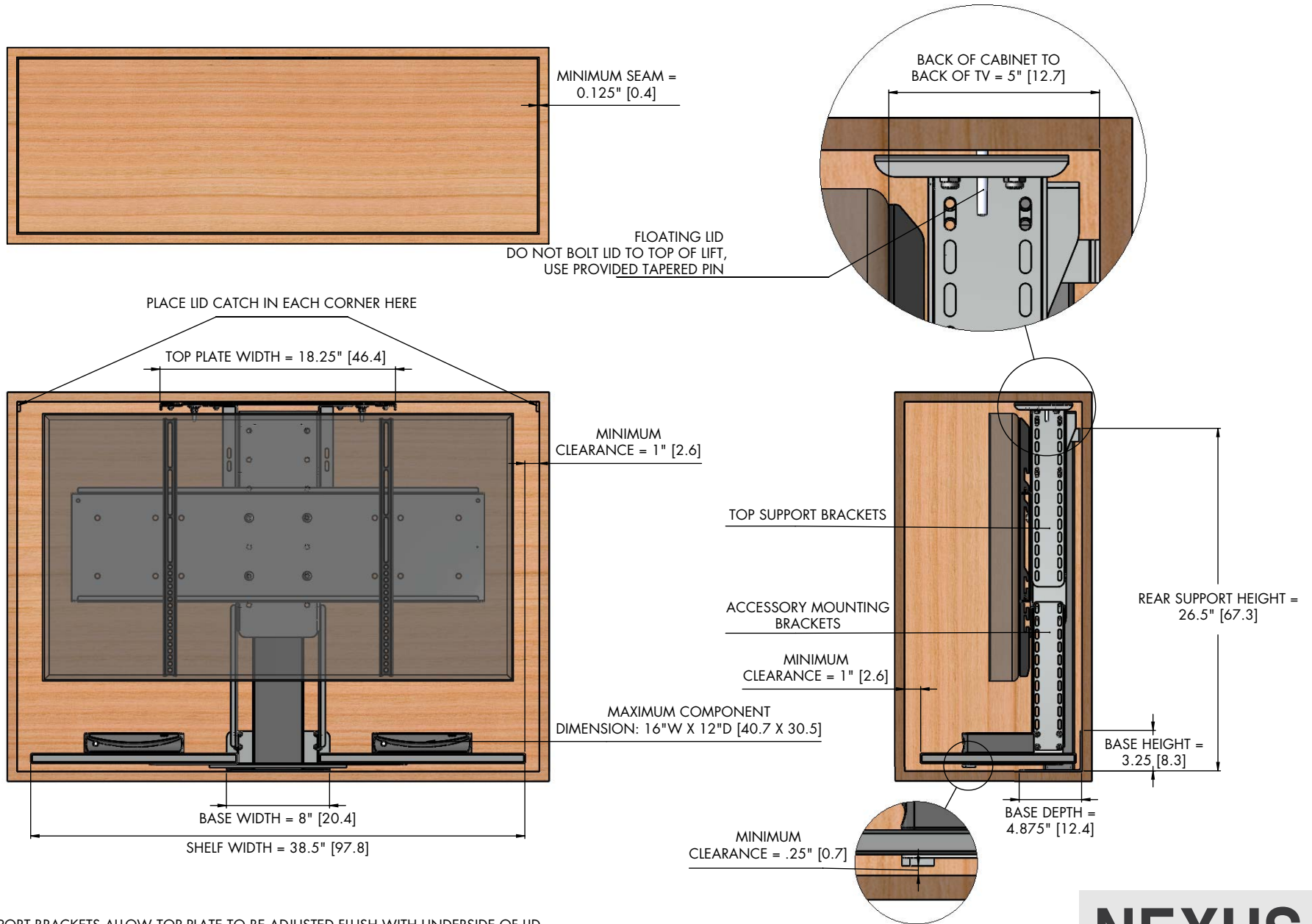
NOTES:

1. THE CABINET BOX SHOWN IN THE DIAGRAM IS FOR REFERENCE ONLY AND IS NOT PROVIDED WITH THE LIFT SYSTEM
2. WHEN DETERMINING TV HEIGHT, ALWAYS USE MANUFACTURER SUPPLIED "TV WITHOUT STAND" HEIGHT
3. LIFT MECHANISM IS POWDERCOATED BLACK STEEL, COLORS IN DIAGRAM ARE FOR CLARITY ONLY

NEXUS₂₁

COPYRIGHT 2019 - ALL RIGHTS RESERVED
UPDATED 11/20/19

MODEL L-50 DIAGRAM WITH COMPONENT SHELF - CABINET REFERENCE DIMENSIONS



- NOTES:
1. TOP SUPPORT BRACKETS ALLOW TOP PLATE TO BE ADJUSTED FLUSH WITH UNDERSIDE OF LID
 2. ACCESSORY MOUNTING BRACKETS ALLOW COMPONENT SHELF TO BE ADJUSTED CLOSE TO UNDERSIDE OF TV
 3. TAPERED PINS ALLOW LID TO FLOAT WITH THE USE OF LID CATCHES.
 4. MINIMUM SEAM CAN BE REDUCED TO 0.0625" [0.2] WITH A 45 DEGREE BEVEL ON THE LID

NEXUS₂₁

COPYRIGHT 2019 - ALL RIGHTS RESERVED
UPDATED 11/20/19