

MODEL L-50ens DIAGRAM PRIMARY ENCLOSURE DIMENSIONS

SPECIFICATIONS (CENTIMETERS ARE REPRESENTED BY [])

MAX TV SIZE : 60"
 MAX WEIGHT CAPACITY : 100 LBS [45.4 KG]
 MAX TRAVEL (EXTENSION) : 39.25" [99.7]
 LIFT SYSTEM HEIGHT : 32.25" [81.9] TO 40.25" [102.2]
 LIFT SYSTEM WIDTH : 37.75" [95.9] TO 54.625" [138.7]
 MANUAL SWIVEL RANGE : +/- 180°

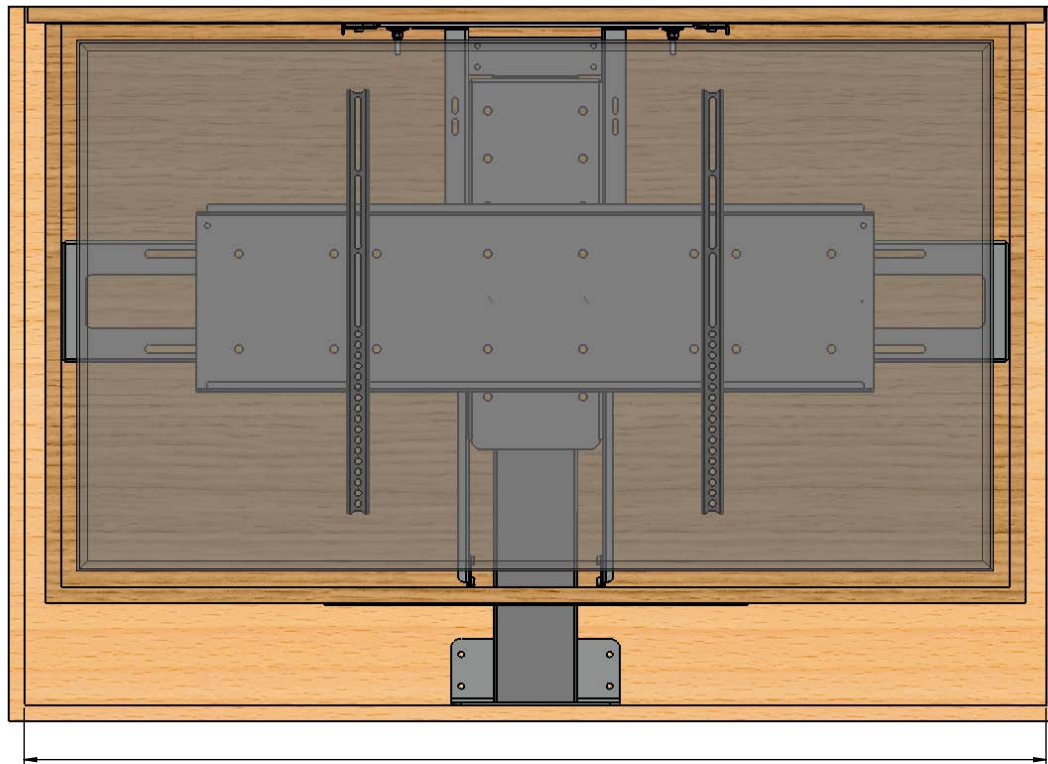
QUICK REFERENCE DIMENSION GUIDE (1 of 2) (USE WHICHEVER IS GREATER)

TV DIMENSIONS : W____, H____, D____

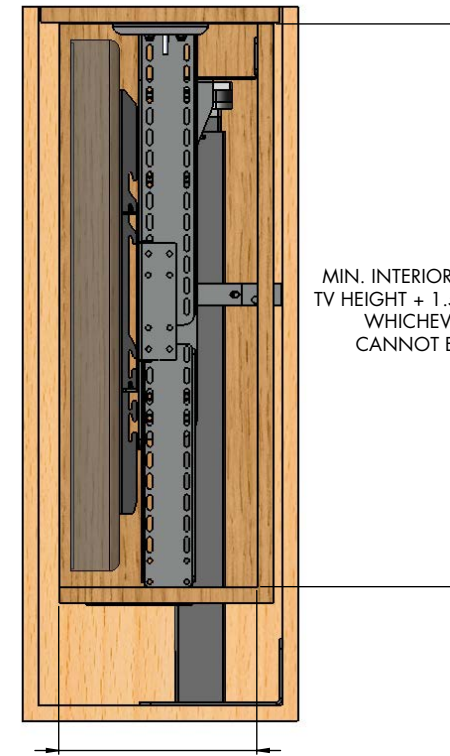
MIN. INTERIOR ENCLOSURE WIDTH : $W + 1.5" [3.8] = \text{____}$ OR 37.75" [95.9] CANNOT EXCEED 54.625" [138.7]

MIN. INTERIOR ENCLOSURE HEIGHT : $H + 1.5" [3.8] = \text{____}$ OR 26" [66] CANNOT EXCEED 37" [94]

MIN. INTERIOR ENCLOSURE DEPTH : $D + 6.5" [16.5] = \text{____}$ OR 7.25" [18.4]



MIN. INTERIOR ENCLOSURE WIDTH = TV WIDTH + 1.5" [3.8] OR 37.75" [95.9],
WHICHEVER IS GREATER; CANNOT EXCEED 54.625" [138.7]



MIN. INTERIOR ENCLOSURE DEPTH =
TV DEPTH + 6.5" [16.5] OR 7.25" [18.4],
WHICHEVER IS GREATER

MIN. INTERIOR CABINET HEIGHT =
TV HEIGHT + 1.5" [3.8] OR 26" [66],
WHICHEVER IS GREATER;
CANNOT EXCEED 37" [94]

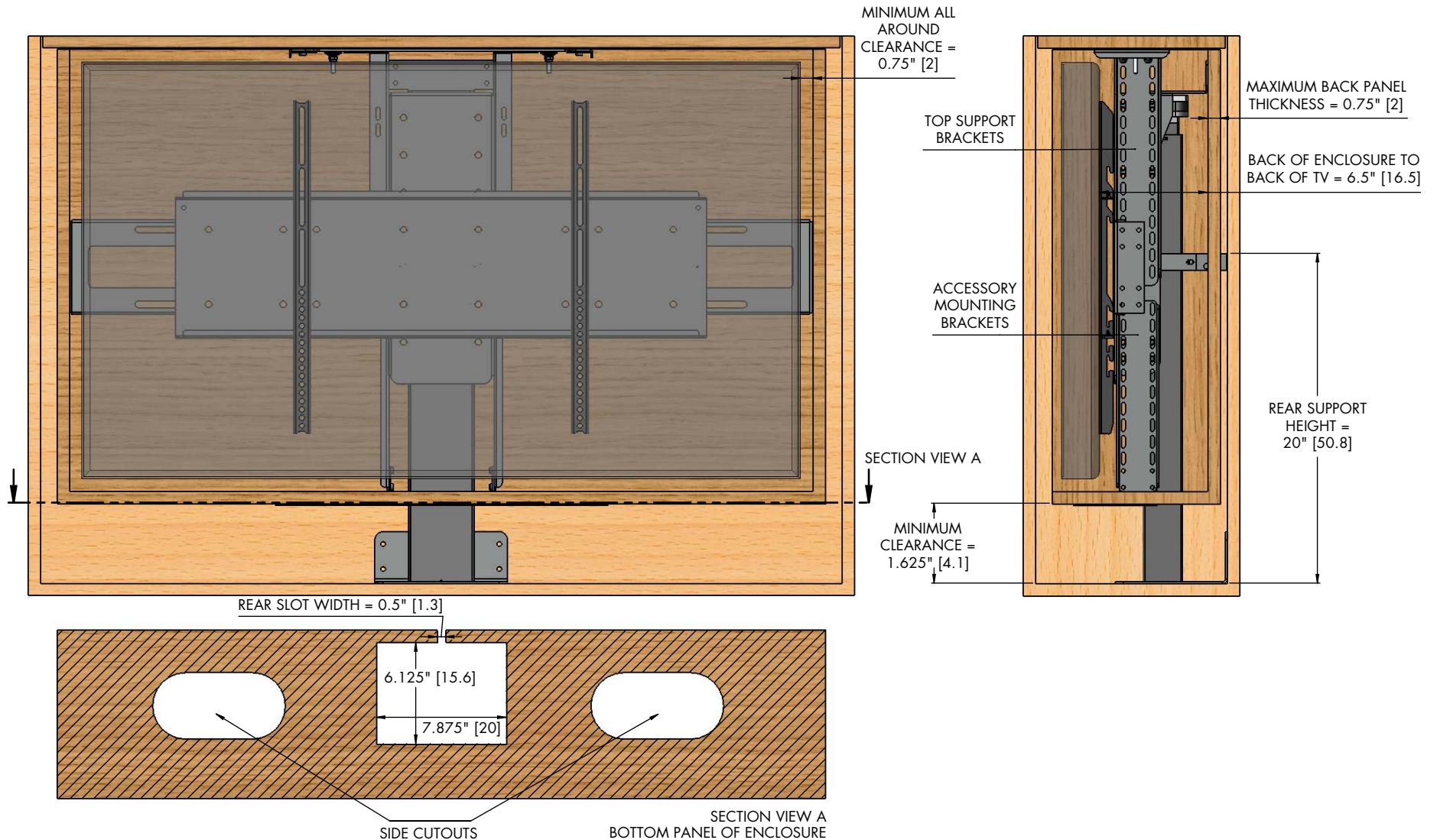
NOTES:

1. THE CABINET BOX AND ENCLOSURE BOX SHOWN IN THE DIAGRAM IS FOR REFERENCE ONLY AND THEY ARE NOT PROVIDED WITH THE LIFT SYSTEM
2. FOR ENCLOSURE REFERENCE DIMENSIONS SEE PAGE 2 OF THIS DIAGRAM, FOR CABINET DIMENSIONS SEE PAGES 3 AND 4
3. DIMENSIONAL EQUATIONS SHOWN ON THIS PAGE OF THE DIAGRAM ARE TO BE USED WITH THE DIMENSIONAL EQUATIONS FOUND ON PAGE 3
4. WHEN DETERMINING TV HEIGHT, ALWAYS USE MANUFACTURER SUPPLIED "TV WITHOUT STAND" HEIGHT
5. LIFT MECHANISM IS POWDERCOATED BLACK STEEL, COLORS IN DIAGRAM ARE FOR CLARITY ONLY

NEXUS₂₁

COPYRIGHT 2019 - ALL RIGHTS RESERVED
UPDATED 11/20/19

MODEL L-50ens DIAGRAM ENCLOSURE REFERENCE DIMENSIONS



NOTES:

1. ALL PANEL THICKNESSES FOR THE ENCLOSURE CANNOT EXCEED 0.75" [2]
2. TOP PANEL OF ENCLOSURE IS DESIGNED TO FLOAT USING PROVIDED TAPERED PINS AND CANNOT BE FASTENED TO THE LIFT
3. SECTION VIEW A REPRESENTS THE BOTTOM PANEL OF THE ENCLOSURE BOX
4. BOTTOM PANEL OF ENCLOSURE MUST HAVE A CENTER CUTOUT TO ACCOMMODATE LIFT COLUMN AND BRACKETRY
5. SIDE CUTOUTS RECOMMENDED FOR VENTILATION AND CABLE MANAGEMENT
6. A 0.5" [1.3] WIDE REAR SLOT MUST BE CUT IN THE CENTER OF THE BACK PANEL OF THE ENCLOSURE TO ACCOMMODATE THE REAR SUPPORT BRACKET
7. REAR SUPPORT BRACKET HEIGHT BASED UPON POSITION OF ENCLOSURE BOX RELATIVE TO BOTTOM PANEL OF CABINET
8. TOP SUPPORT BRACKETS ALLOW TOP PLATE TO BE ADJUSTED FLUSH WITH UNDERSIDE OF THE ENCLOSURE TOP PANEL
9. ACCESSORY MOUNTING BRACKETS ALLOW BOTTOM PLATE TO BE ADJUSTED FLUSH WITH UNDERSIDE OF ENCLOSURE BOTTOM PANEL

NEXUS₂₁

COPYRIGHT 2019 - ALL RIGHTS RESERVED
UPDATED 11/20/19

MODEL L-50ens DIAGRAM PRIMARY CABINET DIMENSIONS

QUICK REFERENCE DIMENSION GUIDE (1 of 2)
 (USE WHICHEVER IS GREATER)
 (interior enclosure dimensions from quick reference on page 1)

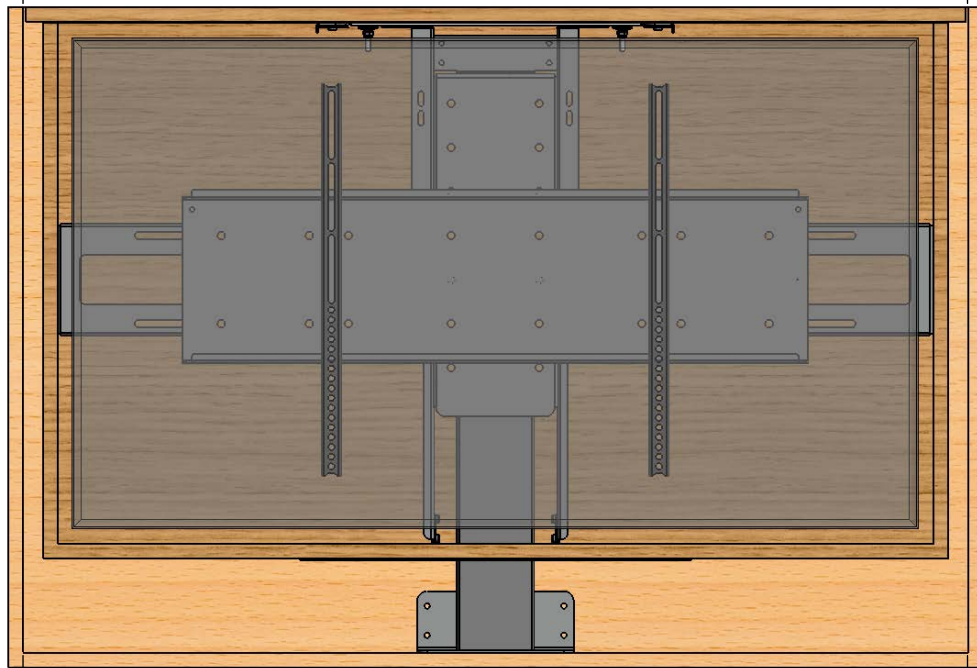
INTERIOR ENCLOSURE DIMENSIONS : W____, H____, D____

MIN. INTERIOR CABINET WIDTH : $W+3.5'' [8.9] = \text{____} \text{ OR } 41.25'' [104.8]$
 MIN. LID CUTOUT WIDTH :

MIN. INTERIOR CABINET HEIGHT : $H+2.5'' [6.4] = \text{____} \text{ OR } 31.25'' [79.4]$

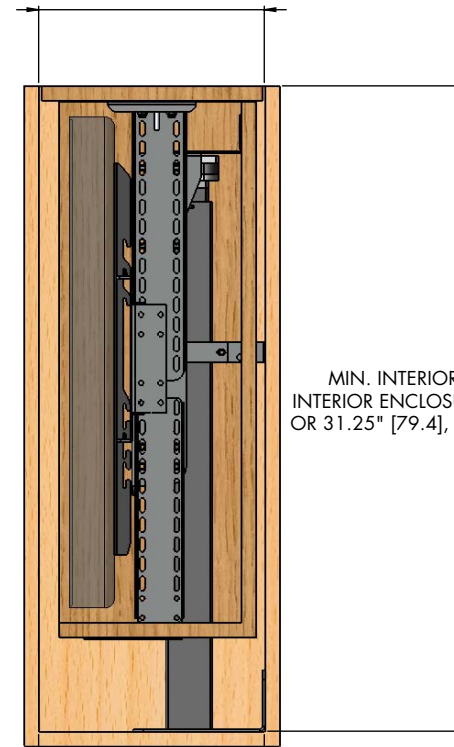
MIN. INTERIOR CABINET DEPTH : $D+2.5'' [6.4] = \text{____} \text{ OR } 9.75'' [24.8]$
 MIN. LID CUTOUT DEPTH :

MIN. LID CUTOUT WIDTH = INTERIOR ENCLOSURE WIDTH + 3.5" [8.9] OR 41.25" [104.8], WHICHEVER IS GREATER



MIN. INTERIOR CABINET WIDTH = INTERIOR ENCLOSURE WIDTH + 3.5" [8.9] OR 41.25" [104.8],
 WHICHEVER IS GREATER

MIN. LID CUTOUT DEPTH =
 INTERIOR ENCLOSURE DEPTH + 2.5" [3.9] OR 9.75" [24.8],
 WHICHEVER IS GREATER



MIN. INTERIOR CABINET DEPTH =
 INTERIOR ENCLOSURE DEPTH + 2.5" [3.9] OR 9.75" [24.8],
 WHICHEVER IS GREATER

MIN. INTERIOR CABINET HEIGHT =
 INTERIOR ENCLOSURE HEIGHT + 2.5" [6.4]
 OR 31.25" [79.4], WHICHEVER IS GREATER

NOTES:

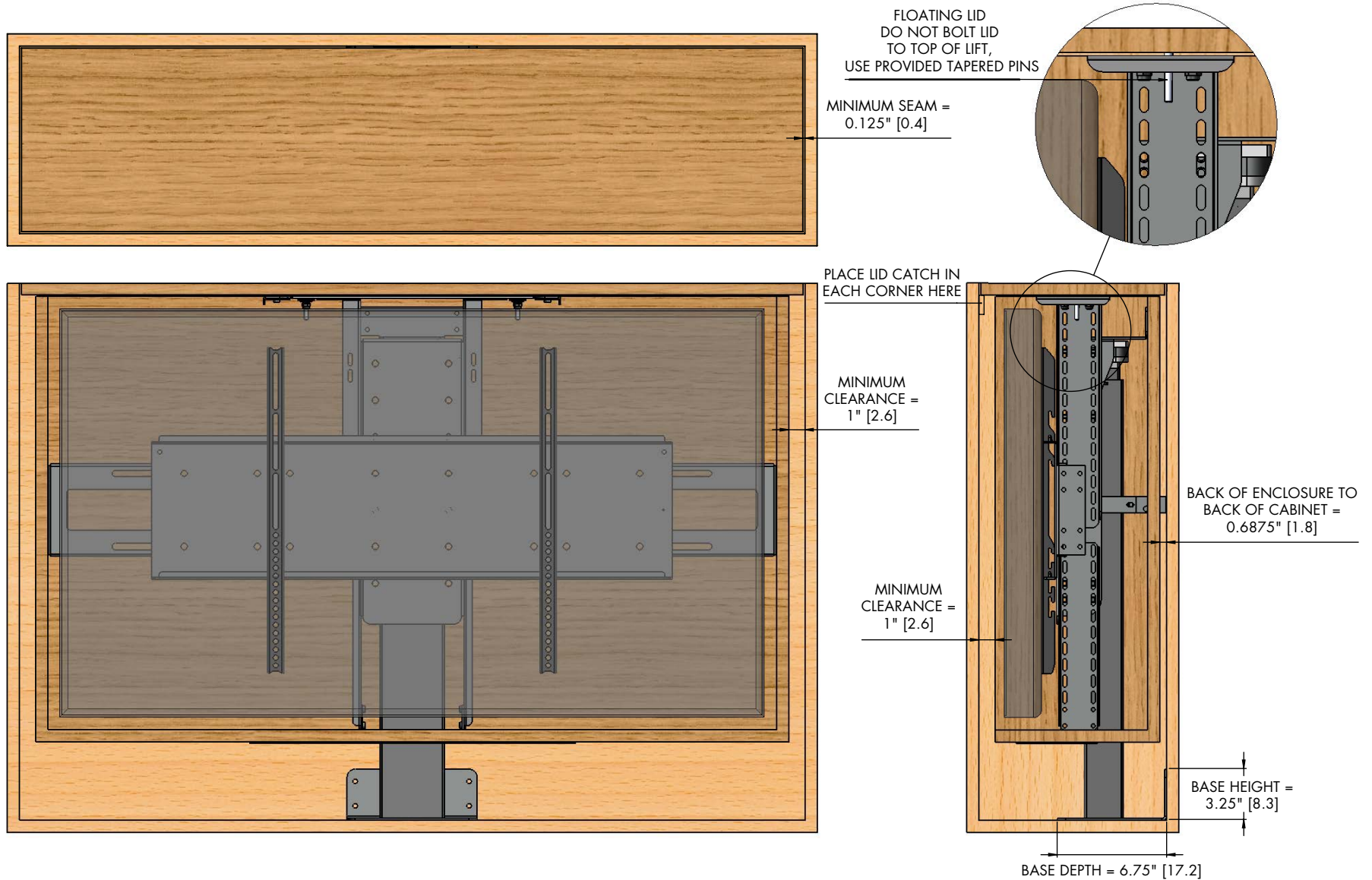
1. THE CABINET BOX AND ENCLOSURE BOX SHOWN IN THE DIAGRAM IS FOR REFERENCE ONLY AND THEY ARE NOT PROVIDED WITH THE LIFT SYSTEM
2. FOR CABINET REFERENCE DIMENSIONS SEE PAGE 4 OF THIS DIAGRAM, FOR ENCLOSURE DIMENSIONS SEE PAGES 1 AND 2
3. DIMENSIONAL EQUATIONS SHOWN ON THIS PAGE OF THE DIAGRAM ARE TO BE USED WITH THE DIMENSIONAL EQUATIONS FOUND ON PAGE 1
4. ALL DIMENSIONS SHOWN IN INCHES WITH CENTIMETERS SHOWN IN []
5. INTERIOR CABINET EQUATIONS ARE BASED ON INTERIOR ENCLOSURE DIMENSIONS

NEXUS₂₁

COPYRIGHT 2019 - ALL RIGHTS RESERVED
 UPDATED 11/20/19

MODEL L-50ens DIAGRAM

CABINET REFERENCE DIMENSIONS



NOTES:

1. THE LID FOR THIS MODEL IS THE TOP PANEL OF THE ENCLOSURE AND MUST FLOAT USING THE PROVIDED TAPERED PINS
2. TAPERED PINS ALLOW LID TO FLOAT WITH THE USE OF LID CATCHES AND ALLOW THE LID TO SIT FLUSH AFTER THE LIFT RETRACTS
3. MINIMUM SEAM CAN BE REDUCED TO 0.0625" [0.2] WITH A 45 DEGREE BEVEL ON THE LID

NEXUS₂₁

COPYRIGHT 2019 - ALL RIGHTS RESERVED
 UPDATED 11/20/19