

MODEL DL-50 DIAGRAM WITH SOUNDBAR MOUNT - PRIMARY CABINET DIMENSIONS

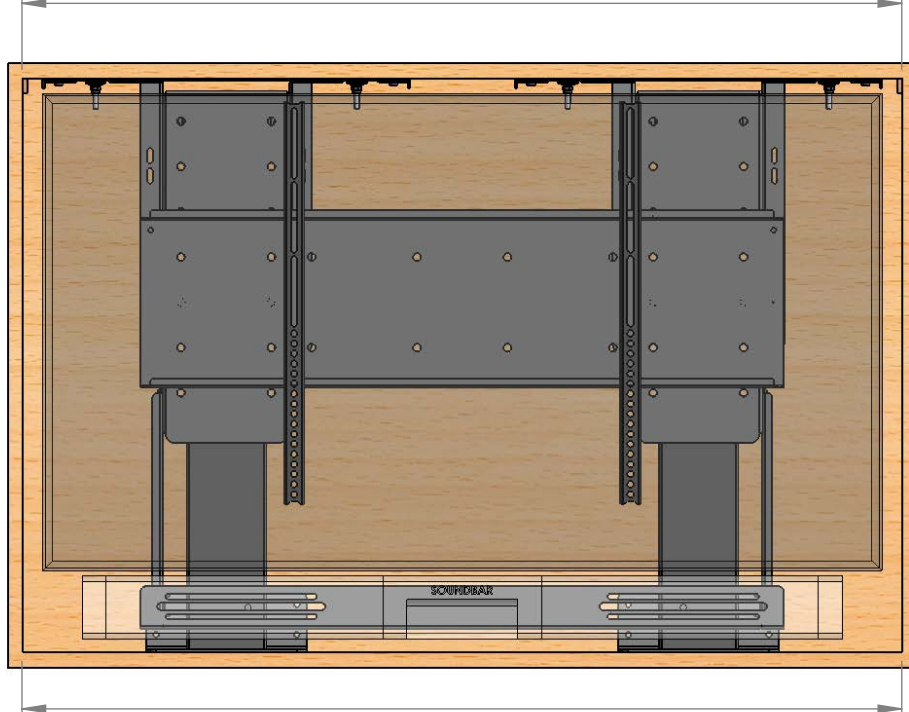
SPECIFICATIONS (CENTIMETERS ARE REPRESENTED BY [])

MAX TV SIZE : 65"
 MAX WEIGHT CAPACITY : 220 LBS [99.8 KG]
 MAX TRAVEL (EXTENSION) : 39.25" [99.7]
 LIFT SYSTEM HEIGHT : 28.5" [72.4] TO 40.5" [102.9]
 MAX TV + SOUNDBAR HEIGHT : 37.25" [94.6] MINUS LID THICKNESS

QUICK REFERENCE DIMENSION GUIDE (USE WHICHEVER IS GREATER)

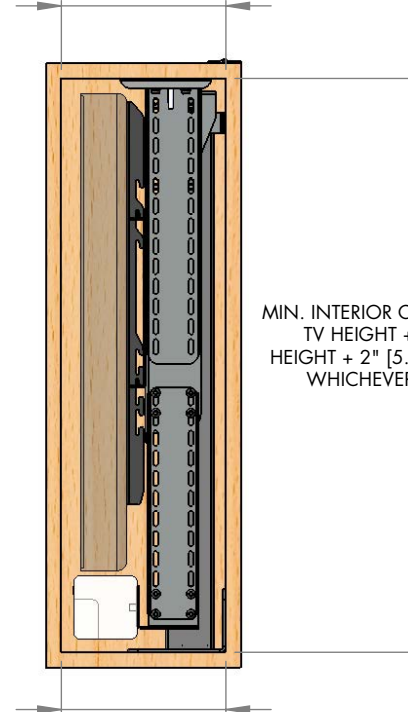
TV DIMENSIONS : W____, H____, D____
 SOUNDBAR DIMENSIONS : SW____, SH____, SD____
 MIN. INTERIOR CABINET WIDTH : $W+2"$ [5.1] = ____ OR $SW+2"$ [5.1] OR 43.75" [111.1]
 MIN. LID CUTOUT WIDTH : _____
 MIN. INTERIOR CABINET HEIGHT : $H+SH+2"$ [5.1] = ____ OR 30" [76.2]
 MIN. INTERIOR CABINET DEPTH : _____
 MIN. LID CUTOUT DEPTH : $D+6"$ [15.2] = ____ OR $SD+5.5"$ [14] = ____

MIN. LID CUTOUT WIDTH = TV WIDTH + 2" [5.1] OR SOUNDBAR WIDTH + 2" [5.1] OR 43.75" [111.1] WHICHEVER IS GREATER



MIN. LID CUTOUT WIDTH = TV WIDTH + 2" [5.1] OR SOUNDBAR WIDTH + 2" [5.1] OR 43.75" [111.1] WHICHEVER IS GREATER

MIN. LID CUTOUT DEPTH = TV DEPTH + 6" [15.2] OR SOUNDBAR DEPTH + 5.5" [14] WHICHEVER IS GREATER



MIN. INTERIOR CABINET HEIGHT = TV HEIGHT + SOUNDBAR HEIGHT + 2" [5.1] OR 30" [76.2] WHICHEVER IS GREATER

MIN. LID CUTOUT DEPTH = TV DEPTH + 6" [15.2] OR SOUNDBAR DEPTH + 5.5" [14] WHICHEVER IS GREATER

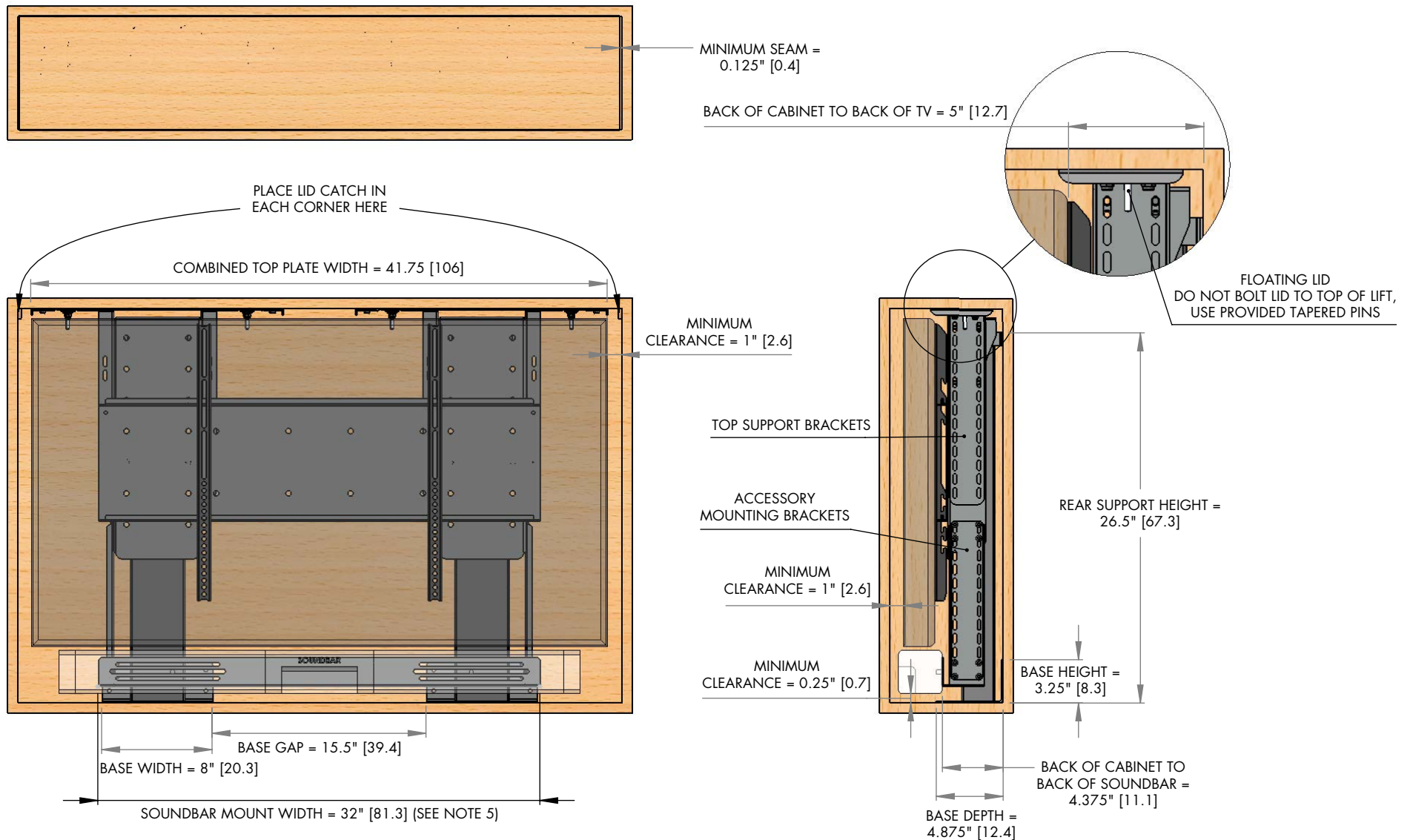
NOTES:

1. THE CABINET BOX SHOWN IN THE DIAGRAM IS FOR REFERENCE ONLY AND IS NOT PROVIDED WITH THE LIFT SYSTEM
2. WHEN DETERMINING TV HEIGHT, ALWAYS USE MANUFACTURER SUPPLIED "TV WITHOUT STAND" HEIGHT
3. LIFT MECHANISM IS POWDERCOATED BLACK STEEL, COLORS IN DIAGRAM ARE FOR CLARITY ONLY

NEXUS₂₁

COPYRIGHT 2019 - ALL RIGHTS RESERVED
UPDATED 11/24/19

MODEL DL-50 DIAGRAM WITH SOUNDBAR MOUNT - CABINET REFERENCE DIMENSIONS



NOTES:

1. TOP SUPPORT BRACKETS ALLOW TOP PLATE TO BE ADJUSTED FLUSH WITH UNDERSIDE OF LID
2. TAPERED PINS ALLOW LID TO FLOAT WITH THE USE OF LID CATCHES.
3. MINIMUM SEAM CAN BE REDUCED TO 0.0625" [0.2] WITH A 45 DEGREE BEVEL ON THE LID
4. ACCESSORY MOUNTING BRACKETS ALLOW SOUNDBAR TO BE ADJUSTED CLOSE TO UNDERSIDE OF TV
5. SOUNDBAR MOUNT FITS SOUNDBARS WITH MOUNTING LOCATIONS BETWEEN 14" [35.6] AND 30" [76.2] APART

NEXUS₂₁

COPYRIGHT 2019 - ALL RIGHTS RESERVED
UPDATED 11/24/19